

News 4 Term 1  
17 March 2022

# North Parmelia Now

*Together we will be DARING and ROBUST learners.*

## Dear Parents and Caregivers

I would like to thank the school community for their support through these challenging times. The situation is very dynamic, and rules and expectations are changing as the COVID-19 circumstances change. The school is endeavouring to keep the community informed via updates and through the newsletter. The school is grateful for the level of support we are receiving. Our priority is to ensure the safety of the school community.

Next week Year 3 and Year 5 students will participate in trial NAPLAN tests. The tests will be administered online. These tests simulate actual NAPLAN conditions and will assist students to gain an appreciation regarding how the actual tests will operate. The NAPLAN tests are conducted on an annual basis and are given to students in Year 3, Year 5, Year 7 and Year 9. The tests can be used to monitor individual student performance and overall school performance.

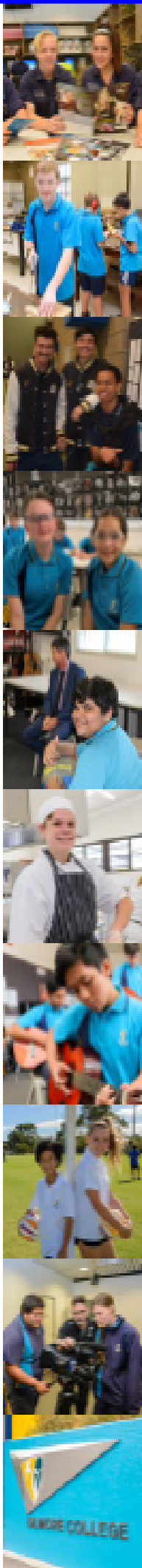
Throughout this week our Year 6 students have been participating in a number of excursions. These excursions are virtually the same as the students would have experienced on their annual school camp, which was cancelled due to the COVID-19 situation. On Monday the students attended Fremantle and Sculptures By The Sea, on Wednesday they visited Penguin Island and today they are visiting the Manjedal Scout Camp. The excursions are both educational and focussed on building positive relationships amongst the students and the staff. The conduct of the students has been excellent. They are to be congratulated for their level of participation and for the manner in which they are interacting with each other.

**Peter Elsegood  
Principal**

We would like to acknowledge the traditional custodians of this land and waters of Australia and the Torres Strait. We respect all Aboriginal and Torres Strait people - their customs and their beliefs. We also pay our respects to elders past and present with particular acknowledgement to the Whadjuk people of the Noongar nation, the traditional owners of the land that our school is built upon.



Durrant Avenue, Parmelia WA 6167  
Telephone: 086173 8500  
Website: <http://www.npps.wa.edu.au>  
Email: [Northparmelia.ps@education.wa.edu.au](mailto:Northparmelia.ps@education.wa.edu.au)



**Gilmore**  
COLLEGE

*We transform positive relationships into meeting the unique learning potential of every student.*

## Join in on one of our Principal's Tours

We warmly invite families of current and prospective students to visit our school for a Tour of the facilities and gain an understanding of the opportunities available for our students.

The 45 minute Tour will commence at 9:00am from the Administration Office at the front of the school. Morning tea and a Question & Answer session will follow the Tour in the conference room. We will answer your questions honestly; explaining our ethos and our passions.

**Thursday, 31 March @ 9:00am**

**Thursday, 23 June @ 9:00am**

**Thursday, 15 September @ 9:00am**

**Thursday, 8 December @ 9:00am**

College Tours provide prospective and current families the opportunity to visit the school during a normal day, visiting the places where learning and engagement take place and to provide a true sense of Gilmore College. The student leaders in particular are a great source of authentic information about what it means to be a Gilmore College student day to day.

Please note, this is a 'parents only' tour. (Students who enrol at Gilmore College will visit the school for their orientation later in the year.)

Please RSVP by phone on 6595 2700 or email at [gilmore.college@education.wa.edu.au](mailto:gilmore.college@education.wa.edu.au)

Dargin Place  
ORELLA WA 6167  
Po Box 86 Kwinana WA 6966

**Families are invited to enjoy a Tour and morning tea with our Principal**



# Excursion 1

## Fremantle & Sculptures by the Sea

Year 6 students enjoying the first of their camp excursions. Visiting Fremantle, the Round House, Museum and then onto Cottesloe beach for the Sculptures by the Sea and a refreshing swim to finish the day.



# Face Masks



Year 3—6  
Please support  
the school by  
sending your child  
to school with a  
face mask.

Thank you



## NPPS Behaviour Expectations



All NPPS members are expected to demonstrate the following behaviour expectations towards themselves, others and the school.

	Friendliness	Respect	Excellence	Determination
NPPS way At ALL times, in ALL areas	<ul style="list-style-type: none"> <li>• Use manners</li> <li>• Use kind words and actions</li> <li>• Be fair and encouraging</li> <li>• Share equipment and resources</li> </ul>	<ul style="list-style-type: none"> <li>• Take care of our school and equipment</li> <li>• Respect others and their property</li> <li>• Use appropriate language and volume</li> <li>• Be trustworthy and honest</li> <li>• Follow staff instructions and school expectations</li> </ul>	<ul style="list-style-type: none"> <li>• Always wear the school uniform with pride</li> <li>• Show independence</li> <li>• Follow before and after school expectations</li> <li>• Set goals and strive to achieve them</li> <li>• Be a role model of expected behaviours</li> <li>• Follow transition expectations</li> </ul>	<ul style="list-style-type: none"> <li>• Take responsibility for your own actions and choices</li> <li>• Try to solve problems positively</li> <li>• Have a positive mindset</li> <li>• Be resilient and try your best</li> <li>• Ask for help from a teacher when needed</li> <li>• Be patient</li> <li>• Be cyber safe</li> </ul>
Learning time	<ul style="list-style-type: none"> <li>• Consider opinions of others</li> <li>• Accept and appreciate others</li> <li>• Take turns</li> <li>• Celebrate other's achievements</li> </ul>	<ul style="list-style-type: none"> <li>• Be considerate and allow others to learn</li> <li>• Be active listeners</li> <li>• Respect other people's work and belongings</li> <li>• Follow classroom expectations</li> </ul>	<ul style="list-style-type: none"> <li>• Challenge yourself to achieve your best</li> <li>• Be responsible for your own learning</li> <li>• Participate in all learning activities</li> <li>• Share your ideas and work in groups equally</li> </ul>	<ul style="list-style-type: none"> <li>• Stay focused and complete set tasks</li> <li>• Be persistent</li> <li>• Be actively involved</li> <li>• Reflect and strive to achieve goals</li> </ul>
Outside	<ul style="list-style-type: none"> <li>• Include others</li> <li>• Make positive choices</li> </ul>	<ul style="list-style-type: none"> <li>• Use all areas and outside equipment appropriately</li> <li>• Always put our rubbish in the correct bin</li> </ul>	<ul style="list-style-type: none"> <li>• Stay in your allocated areas</li> <li>• Walk and play safely</li> <li>• Always wear your hat</li> <li>• Be ready for class when the siren goes</li> </ul>	<ul style="list-style-type: none"> <li>• Finish playing and pack away when you hear the signal</li> <li>• Sit down to eat with manners</li> </ul>